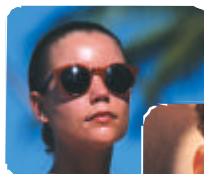


Library

# digital photographs at your fingertips

A comprehensive and versatile software product for managing your photographs



logicmighty

Photo

photo**library**



# TAKE CONTROL OF YOUR PHOTOGRAPHS

PhotoLibrary from LogicMighty, offers you the best solution for managing digital photographs. Create a corporate library, which is easily accessible to designers and any nominated users within your organisation. By using a web interface, departments can have shared access to the library at any time. Needless duplication is avoided by creating a centralised resource, that is easily managed and made accessible remotely, if required.

PhotoLibrary gives you the power to recall any photograph efficiently for that promotional, press or presentation document.



# Photo Library



# DIGITAL PHOTOGRAPHS AT YOUR FINGERTIPS

PhotoLibrary is a web-based software product, accessible by any web browser, utilising the power of your organisation's intranet and accessible from the internet. Using simple or advanced search criteria, any image can be quickly accessed from its database. PhotoLibrary is the comprehensive and versatile solution for managing your photographs, with the flexibility and reassuring security your business needs.



PhotoLibrary brings you many benefits:

- Save time finding, retrieving and storing photographs
- Photographs accessible throughout your organisation
- Authorise remote access to third parties via the web
- Integration with Adobe Photoshop
- Watermarking of preview images
- Automatic extraction of IPTC information

PhotoLibrary Hosting:

For those customers that do not want to install the PhotoLibrary software on their own servers, LogicMighty can host your PhotoLibrary providing secure internet access available exclusively to your company.



# PHOTOLIBRARY FROM LOGICMIGHTY

## Web Interface

### Easy to Use

Access the PhotoLibrary from anywhere within your organisation using a web browser. Photographs can be quickly searched by category and displayed as thumbnails.

### Configure to Suit Your Needs

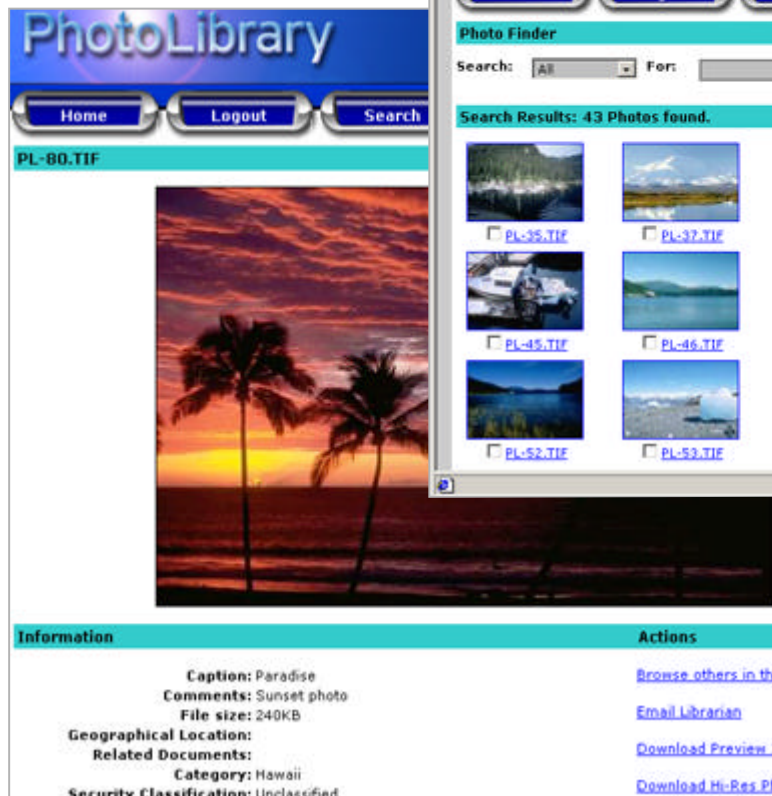
The comprehensive set-up facility controls user access to PhotoLibrary, ensuring security, but also allows your organisation to tailor this powerful tool to your specific needs.

### Preview Photographs

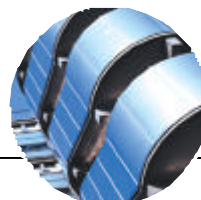
Users can preview a low-resolution image of the photograph, together with all index information. This speeds up browsing through your image archives and maximises the value of these assets.

### Advanced Search

The advanced search allows a specific photograph to be quickly found using cross references and advanced database query logic. Laborious manual searching of libraries and card indexes are obsolete.



The screenshot displays the PhotoLibrary web interface in a Microsoft Internet Explorer browser window. The page features a navigation bar with 'Home', 'Logout', and 'Search' buttons. Below this is a 'Photo Finder' section with search filters and a 'View As' dropdown set to 'Thumbnails'. The search results show 43 photos found, with a grid of 12 thumbnails displayed. The selected photo, 'PL-80.TIF', is shown in a larger preview window. Below the preview, there are two columns: 'Information' and 'Actions'. The 'Information' column contains details such as 'Caption: Paradise', 'Comments: Sunset photo', 'File size: 240KB', 'Geographical Location', 'Related Documents', 'Category: Hawaii', and 'Security Classification: Unclassified'. The 'Actions' column includes links for 'Browse others in this', 'Email Librarian', 'Download Preview In', and 'Download Hi-Res Pho'.





## Photos and documents

As well as storing digital photo images, the PhotoLibrary can be used to store a range of documents and media files.

### Supported photo formats:

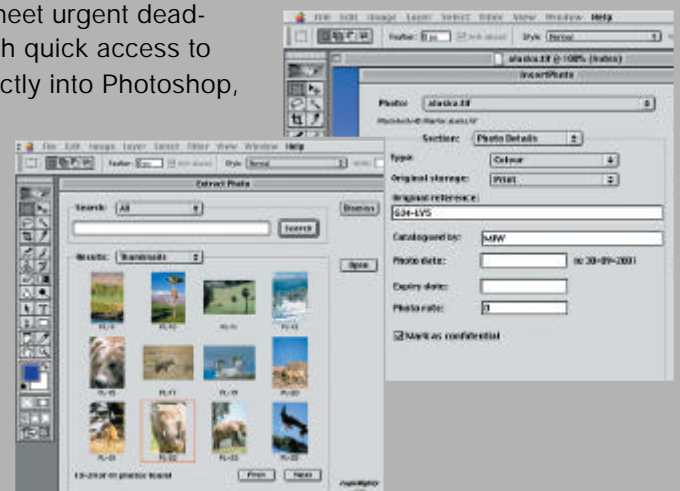
- TIFF (Tagged Image File Format)
- JPEG (Joint Photographic Experts Group)
- PNG (Portable Network Graphics)
- TGA (Targa)
- BMP (Windows bitmap)
- PCX (PC Paintbrush)
- PSD (Adobe Photoshop)
- GIF (Graphics Interchange Format)

### Supported document and media formats:

- EPS (Encapsulated PostScript)
- MPEG (Mpeg video)
- DOC (Microsoft Word document)
- PDF (Adobe PDF document)
- PPT (Microsoft Powerpoint)

## Adobe Photoshop plug-in

Access the PhotoLibrary direct from Adobe Photoshop, with the addition of our plug-in software. To meet urgent deadlines, this module provides designers with quick access to stock images, so photographs open directly into Photoshop, saving valuable time.



## Platform Compatible

PhotoLibrary works equally well on either PC or Apple Mac platforms. Organisations that have departments using both PC and Apple Mac can all access the library from their respective platforms.



## Features

- Web interface only requires a web browser, no client software installation required
- Access to library controlled by login name and password
- Full audit trail of user access to photographs in the library
- Simple administration of PhotoLibrary via web interface
- Automatically generates thumbnail and preview images
- Extraction of IPTC information from jpeg, tiff and psd files
- Watermarking of preview images
- Operating system compatible for Mac OS or MS Windows
- Batch input of photographs
- Optional Adobe Photoshop plug-in available

## System Requirements

### Server requirements

- Microsoft IIS 4.0 or later
- Microsoft SQL Server (v7 or later) or MySQL (v4.1 or later)

### Workstation requirements

- Any web browser on Mac OS or MS Windows, e.g. Netscape, Explorer etc.
- Adobe Photoshop v6.0 or later on Apple Mac or PC

# PhotoLibrary



For more information contact sales on  
023 80 315784

Email: [sales@logicmighty.co.uk](mailto:sales@logicmighty.co.uk)  
[www.logicmighty.co.uk](http://www.logicmighty.co.uk)

LogicMighty Ltd.  
6 Brownlow Ave, Bitterne, Southampton. SO19 7BY  
All trademarks acknowledged

**logicmighty**